

# “Kindergarten Nativity”

By Labors of Love

Stitch and thread selection by **David McCaskill**



**LL490F – ‘Wiseman 3’**

All rights reserved. No part of this design or instructions can be reproduced, manually or mechanically, without written permission of Labors of Love.

Copyright January 2011  
[www.laborsofloveneedlepoint.com](http://www.laborsofloveneedlepoint.com)

## MATERIAL LIST

### KREINIK METALLIC

1/16 Ribbon 102  
#8 Kreinik Metallic 421  
#8 Kreinik Metallic 002  
#12 Kreinik Metallic 002  
#12 Kreinik Metallic 005HL  
#4 Kreinik Metallic 002  
#8 Kreinik Metallic 044  
#8 Kreinik Metallic 5550  
#8 Kreinik Metallic 622

### RAINBOW GALLERY

Splendor S825

### MISCELLANEOUS SUPPLIES

8 X 10 Stretcher Bars  
#22 and #24 Tapestry Needles  
Laying Tool  
Normal Stitching Supplies  
3 Black beads

### STARS AND SKY

Just like you did in school, stitch the stars as diagram 1 using the 1/16 Metallic Ribbon 102. Star with a Cross stitch on the bottom center thread, and then lay the sides as numbered.

(Dia. 1)

### DMC

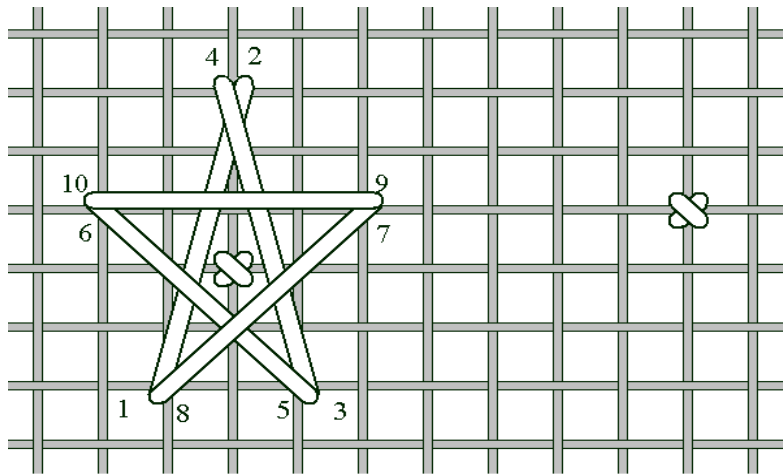
Floche 334  
Floss 334  
Floss 843  
Floss 959  
Floss 3033  
Floss 3790  
Floss 3861  
Black #5 Pearl

### RIVER SILKS

4MM color 215  
4MM color 240

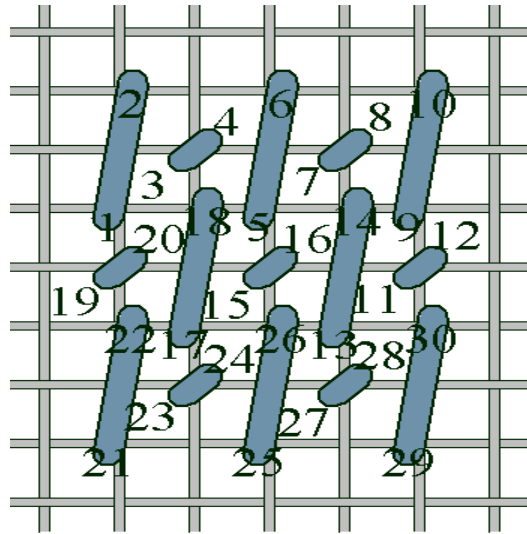
### SUNDANCE BEADS

Optional - Black #14 Beads



Using 1 or 2 strands of Floche 334, work the sky as diagram 1A, compensating as necessary. Work over the ruffled head dress.

(Dia. 1A)

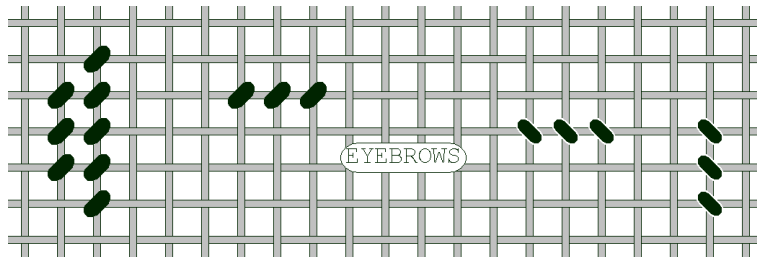


### WISEMAN'S FACE and HAIR

Basketweave his skin using four plies of Floss 843, 3790, 3033, and 3861. Cross-stitch his mouth with four plies Floss 3860 and Tent Stitch his eyes with four plies 334, 959 and Blanc.

Using black Pearl #5, Tent Stitch the hair and eyebrows as diagram 2.

(Dia. 2)

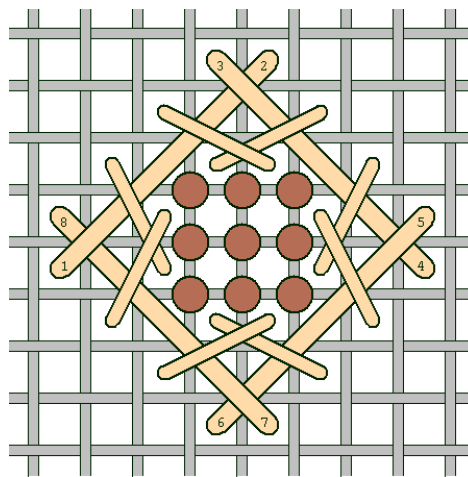


### TURBAN

French Knot the jewels using a #8 Kreinik Metallic 421.

With a #12 Kreinik 002, weave a diamond shape around the jewel as 1-8 in diagram 3. With a #4 Kreinik 002, lay the crossed "V" formation over the diamond.

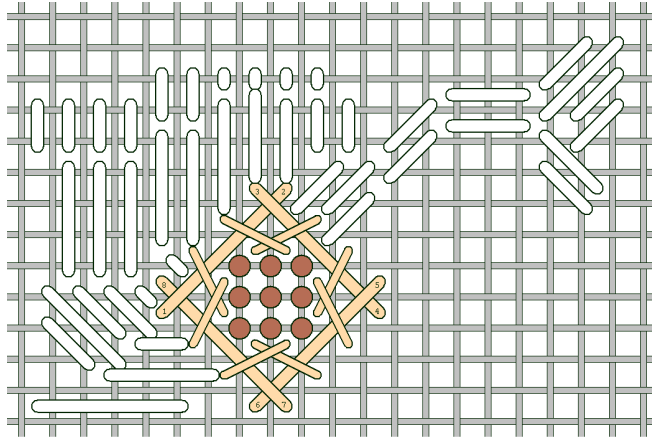
(Dia. 3)



With River Silk 215 for the lighter areas and River Silk 240 for the darker areas, lay in upright satin stitches in the direction

shown in diagram 3A,  
 allowing the painted gray  
 lines to be your shared hole.

(Dia. 3A)

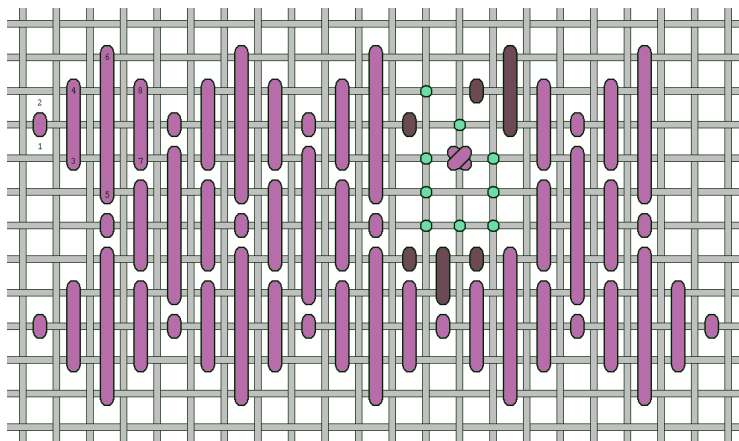


**TRAIN**

French Knot the entire train using the Black Pearl #5 for the windows and smoke stack and Kreinik #8 002, 044 and 5550 for the remaining areas.

**ROBE**

Using two plies Splendor S825, stitch the background of the robe as diagram 4, allowing the shaded colors to shadow through the stitch. Note the Cross-Stitch on the intersection within the pattern. Do not encroach on the pattern as reflected by the darker stitches in the diagram.

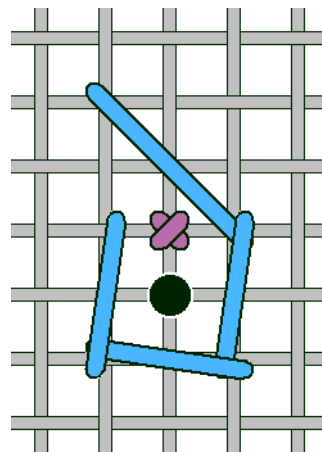


(Dia. 4)

**Stitch over the tassel**

Using a #8 Kreinik metallic 622, work the pattern as diagram 4A. Complete the pattern with a Black #14 Bead or a French Knot using #12 Kreinik 005HL.

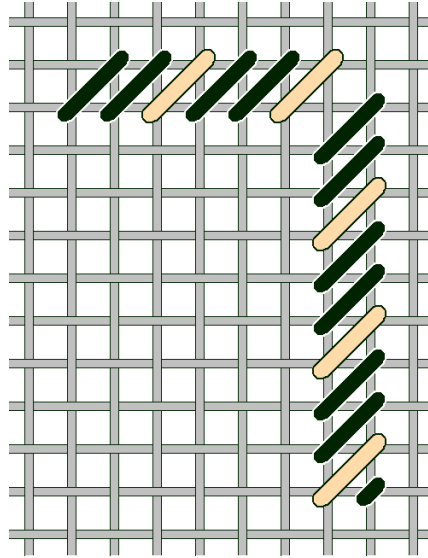
(Dia. 4A)



## BELT AND TASSEL

Using the #12 Kreinik 005HL and the #12 Kreinik 002, lay in the belt and dangling cord as diagram 5.

(Dia. 5)



Using two six-inch lengths of the #12 Kreinik 005HL, wrap a thread at the base of the cord as diagram 5A. With the #12 Kreinik 002, wrap the black strands as diagram 5B to bunch the four strands together. Cut the tassel the desired length, then place a business card under the Kreinik and using a needle as a comb, comb out the filaments to form a tassel.

