

“Kindergarten Nativity”

By Labors of Love

Stitch and thread selection by **David McCaskill**



LL490G – “Wiseman 2”

All rights reserved. No part of this design or instructions can be reproduced, manually or mechanically, without written permission of Labors of Love.

Copyright January 2011
www.laborsofloveneedlepoint.com

MATERIAL LIST

KREINIK METALLIC

1/16 Ribbon 102
#8 Metallic Braid 001
#8 Metallic Braid 002
#8 Metallic Braid 003
#8 Metallic braid 008HL

RAINBOW GALLERY

Splendor S1035
Splendor S1036

MISCELLANEOUS SUPPLIES

8 X 10 Stretcher Bars
#22 and #24 Tapestry Needles
Laying Tool
Normal Stitching Supplies
3 Black beads

DMC

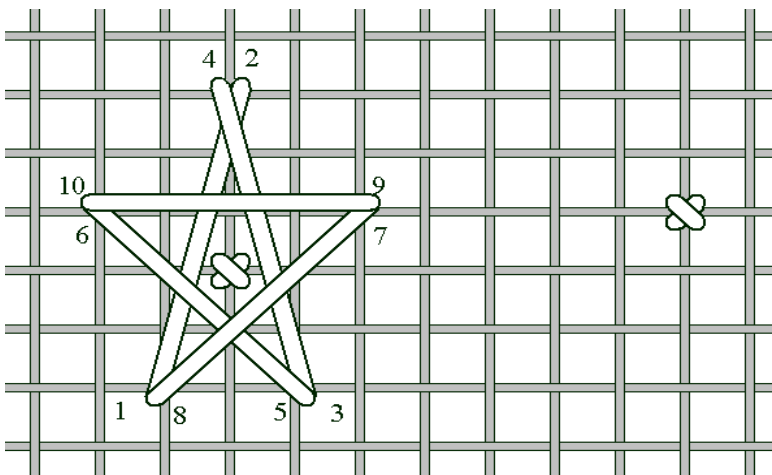
Floche 334
Floss Blanc
Floss 948
Floss 939
Floss 950
Floss 3841
Floss 3845
Floss in desired hair color
Pearl 5 in desired hair color

SUNDANCE BEADS

Real Gold #14 Beads

STARS AND SKY

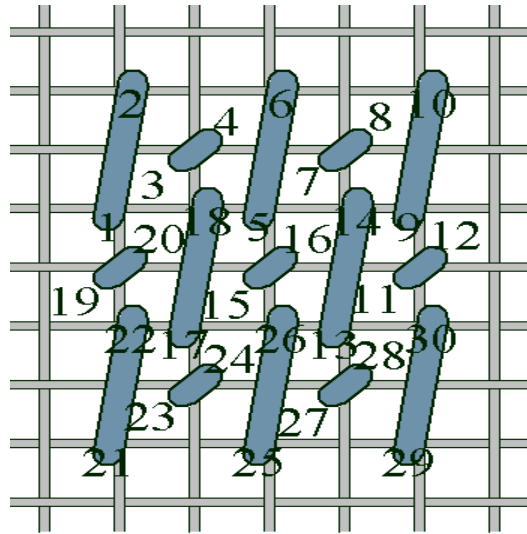
Just like you did in school,
stitch the stars as diagram 1
using the 1/16 Metallic
Ribbon 102. Star with a
Cross stitch on the bottom
center thread, and then lay
the sides as numbered.



(Dia. 1)

Using 1 or 2 strands of Floche 334, work the sky as diagram 1A, compensating as necessary. Work over the ruffled head dress.

(Dia. 1A)

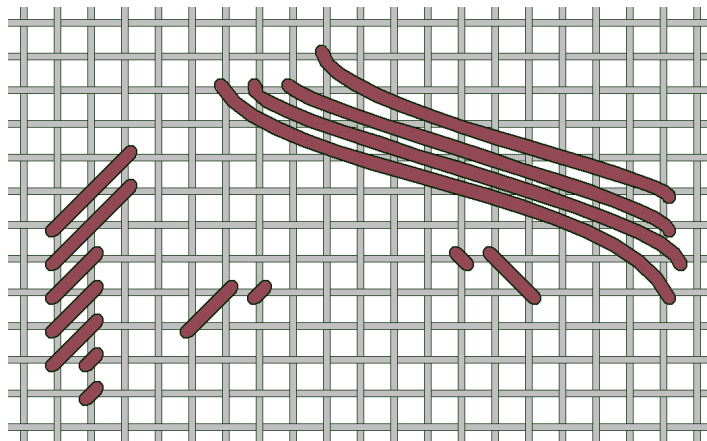


WISEMAN'S FACE and HAIR

Basketweave his skin using four plies of Floss 948, 3779, 950 and Blanc. Cross stitch his mouth with four plies Floss 3805 and Tent Stitch his eyes with four plies 3841 and 939

Using a Pearl #5 and one ply of the matching Floss color couch the bangs and lay in a Diagonal Satin stitch for the sideburns as diagram 2. Add eyebrows as shown.

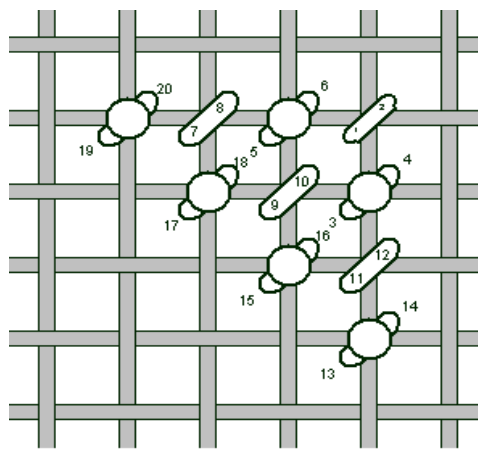
(Dia. 2)



CROWN

With the #8 Kreinik 002, work the crown in a combination of French Knots and alternating diagonal rows of Tent Stitches as diagram 3.

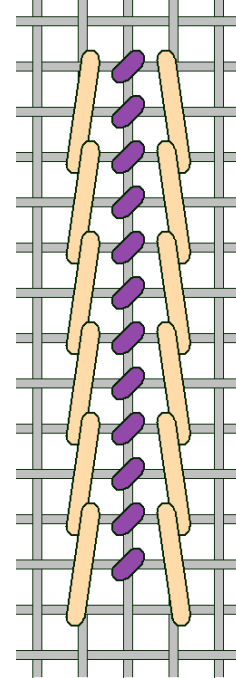
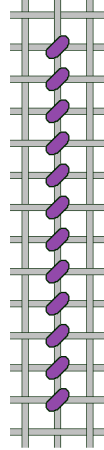
(Dia. 3)



ROBE

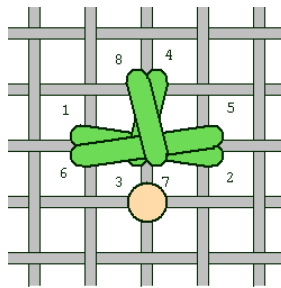
With three plies Splendor S1036, Basketweave the lining of the cuffs; Tent stitch the creases at the elbows and down the center of the robe as diagram 4.

(Dia. 4)



(Dia. 4B)

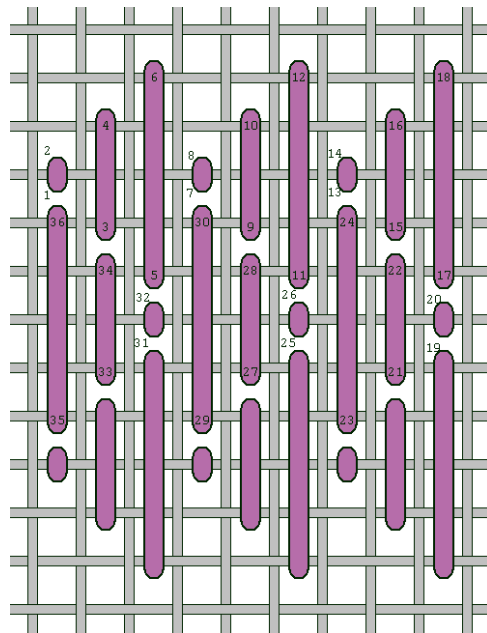
Using a #8 Kreinik 008HL and a small gold bead, stitch the ornamentation as diagram 4A. Using the #8 Kreinik 002, stitch each sides of the center band as diagram 4B.



(Dia. 4A)

Using two plies Splendor S1035 and allowing the shading to shadow through the stitch, lay in the background of the robe as diagram 4C.

(Dia. 4C)



Cross-Stitch the gold trim around the sleeve opening with the #8 Kreinik Metallic 002.

URN

Using #8, Kreinik Metallic 001, 002, 003 and 008HL, stitch the urn as shown in diagram 5.

(Dia. 5)

