

***LL513 – Retro Christmas Bulb  
“Santa”***

Stitch Guide by Julia Snyder & Mark Young

**Thread List**

**Neon Rays +**

NP22 – Crimson

**Neon Rays**

N01 – Black

N02 – White

N22 - Crimson

N54 – Pale Blue

**Arctic Rays**

AR2 – White

**Fuzzy Stuff**

FZ26 – Antique White

**Petite Frosty Rays**

PY081 – Grass Green

**Petite Sparkle Rays**

PS44 – Tan

**Fyre Works Soft Sheen**

FT56 – Vintage Gold

FT59 – Tawny Gold

**Au Ver A Soie Silk**

Soie d’Alger 3932

Soie d’Alger 3598

**Sundance Beads**

Size 14 Color #464B - Silver

Beading Thread

**Kreinik**

#8 Braid 005 - Black



# Screw Cap

## Stitches:

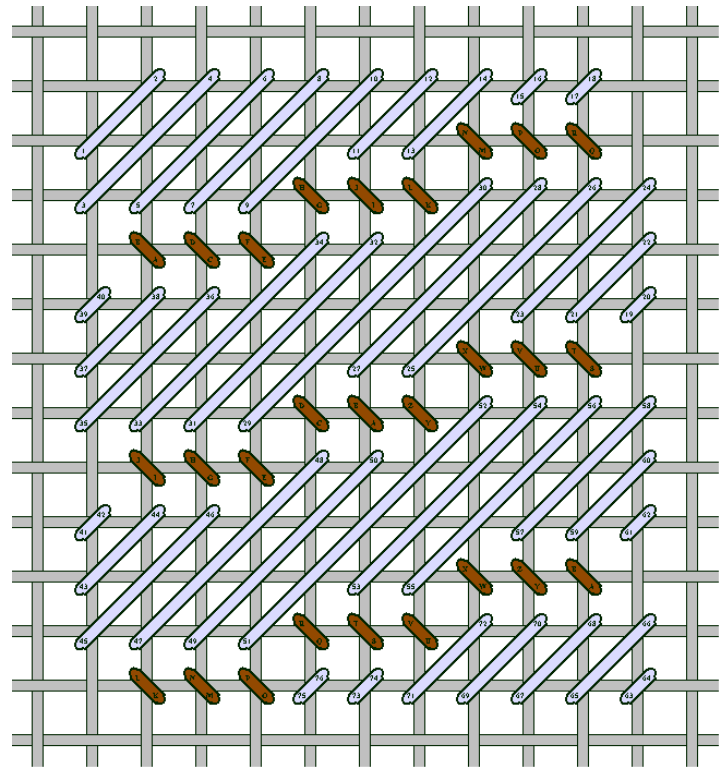
- Basketweave
- Slanted Satin Stitch
- Continental

Using Kreinik #8 Braid 005, stitch the black bump at the top of the screw cap in Basketweave.

Using Fyre Works Soft Sheen FT56 Vintage Gold, stitch the four wide bands in Slanted Satin Stitch as diagrammed.

Using Fyre Works Soft Sheen FT59 Tawny Gold, stitch the three thin bands in reverse slant Continental as diagrammed.

Using a white silk or cotton floss, fill in the open stitch at the ends of each of the three thin bands.



# Face

## Stitches:

- Basketweave
- Tent Stitch
- Slanted Satin Stitch

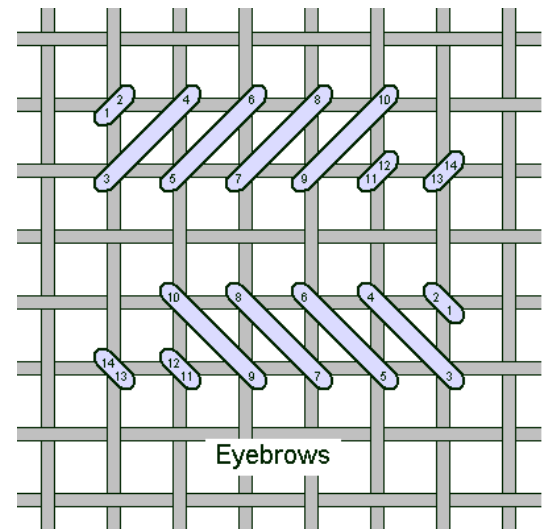
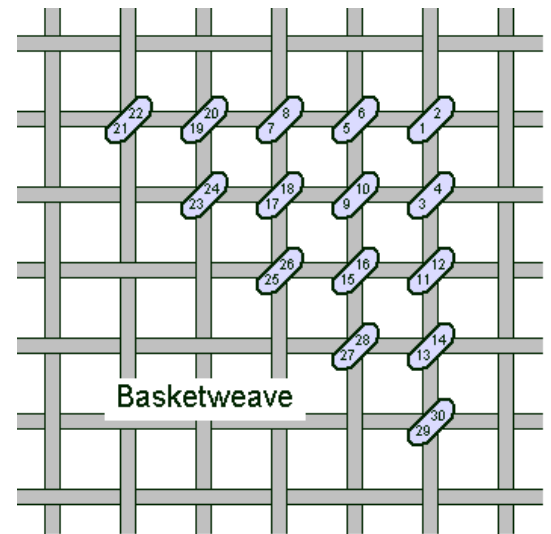
Using three strands of Soie d'Alger 3598, stitch the cheeks and nose in Basketweave.

Using three strands of Soie d'Alger 3932, stitch the rest of the face in Basketweave.

Using one strand each of Neon Rays N54 Pale Blue, N01 Black and N02 White, stitch the eyes in Tent Stitch.

Using one strand of Neon Rays N22 Crimson, stitch the mouth in Tent Stitch.

Using one strand of Fuzzy Stuff FZ26 Antique White, stitch the eyebrows in Slanted Satin Stitch.



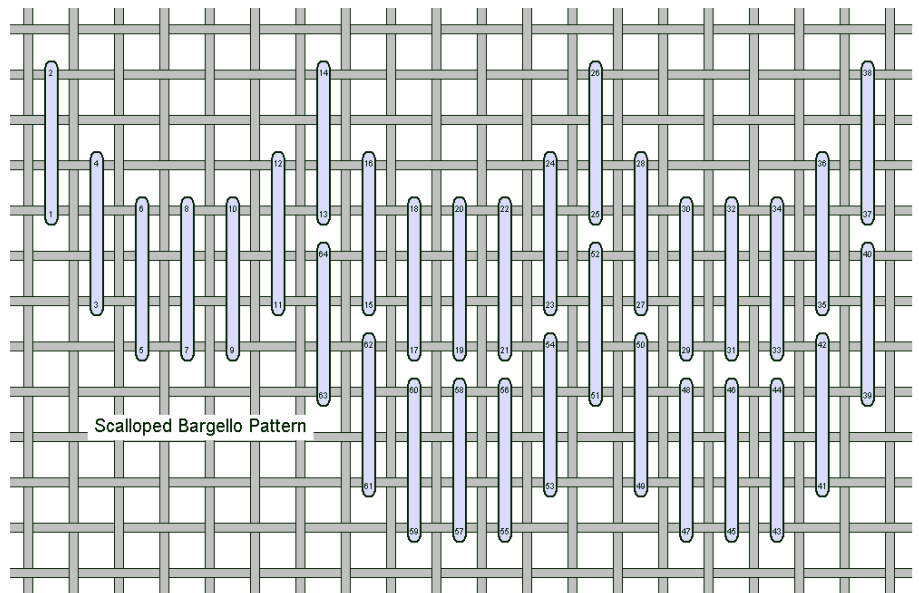
## Beard and Mustache

### Stitch:

Scalloped Bargello Pattern  
Slanted Satin Stitch

Using one strand of Fuzzy Stuff FZ26  
Antique White, stitch the mustache in  
long Slanted Satin Stitches.

Using one strand of Fuzzy Stuff FZ26  
Antique White, stitch the beard in  
Scalloped Bargello Pattern.



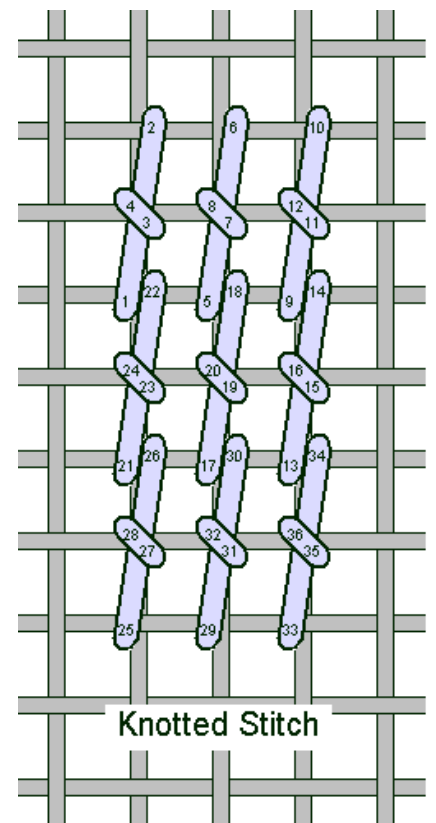
## Suit

### Stitch:

Knotted Stitch  
French Knots

Using one strand of Neon Rays+ N22 Crimson, stitch the  
suit in Knotted Stitch. Add a dark filament to the Neon  
Rays+ or use a darker red thread to stitch the line between  
the two legs.

Using one strand of Arctic Rays AR2 White, stitch the fur  
trim in French Knots.



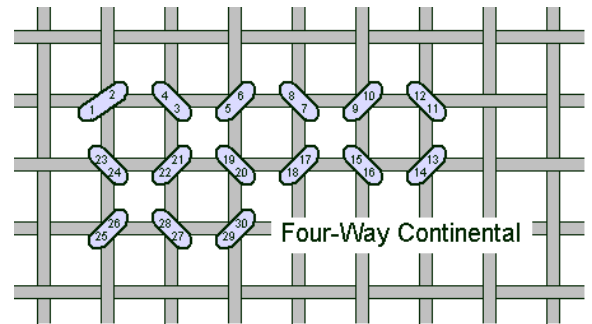
## Belt and Boots

### Stitch:

Four-Way Continental  
Beading

Using one strand of Kreinik #8 Braid 005 Black, stitch the belt and boots in Four-Way Continental.

Stitch the buckle using Sundance Size 14 Color# 464B Silver beads.

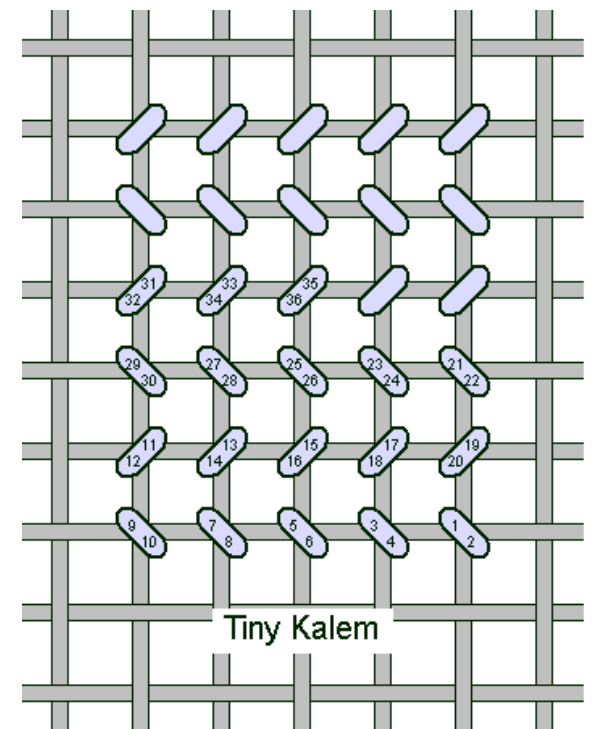


## Mittens

### Stitch:

Tiny Kalem

Using one strand of Petite Frosty Rays PY081 Grass Green, stitch the mittens in Tiny Kalem. Turn the canvas  $\frac{1}{4}$  turn so that the Tiny Kalem is stitched horizontally as shown.



## Toy Bag

### Stitch:

Reverse Basketweave

Using one strand of Petite Sparkle Rays PS44 Tan, stitch the toy bag in Reverse Basketweave.

